



Vuliwear® is a unique brand of designer fashion accessories and clothing; our exclusive line of **designer sunglasses** is the first of more to come. All of our plano (non-prescription) sunglasses are **unisex** and made with high-quality polarized lenses that reduce glare for better color, clarity, detail and provide UV protection from the sun.

Our **mission** is to build a collection of distinctive clothing and fashion accessories that are quality, innovative and creative. Vuliwear wants to be a part of your personal style statement.

Vuliwear sunglasses **expose** the hidden **beauty** and uniqueness that surround us every day by cleverly incorporating them into fashion. What's more mythological than discovering something cool that's been right in front of your eyes the entire time?

Vuliwear sunglasses **challenge** the norm by focusing on the lenses as opposed to the frame like most eyewear designers. While the frame is certainly important, what sets us apart is our **distinctive** lenses and a twist on the classic **aviator** frame both made in Italy. That's why our customers choose Vuliwear.

Our exclusive lenses are **inspired** by the awesome colors/patterns of the eyes of **insects**. The first two styles in our collection: **BlknBlu** (black) is inspired by the Blue Damselfly and **Zag** (gold) is inspired by the African Twig Mantis. We call them *"Beautiful Shades of eeww"*.

We realize the **eyewear** market is saturated, but when you're wearing a pair of **Vuli's**, we are confident the light-weight metal frames and **designer** lenses will confirm you've made the right **choice**.

When **Fashion & Nature** collide Vuliwear comes **alive!**

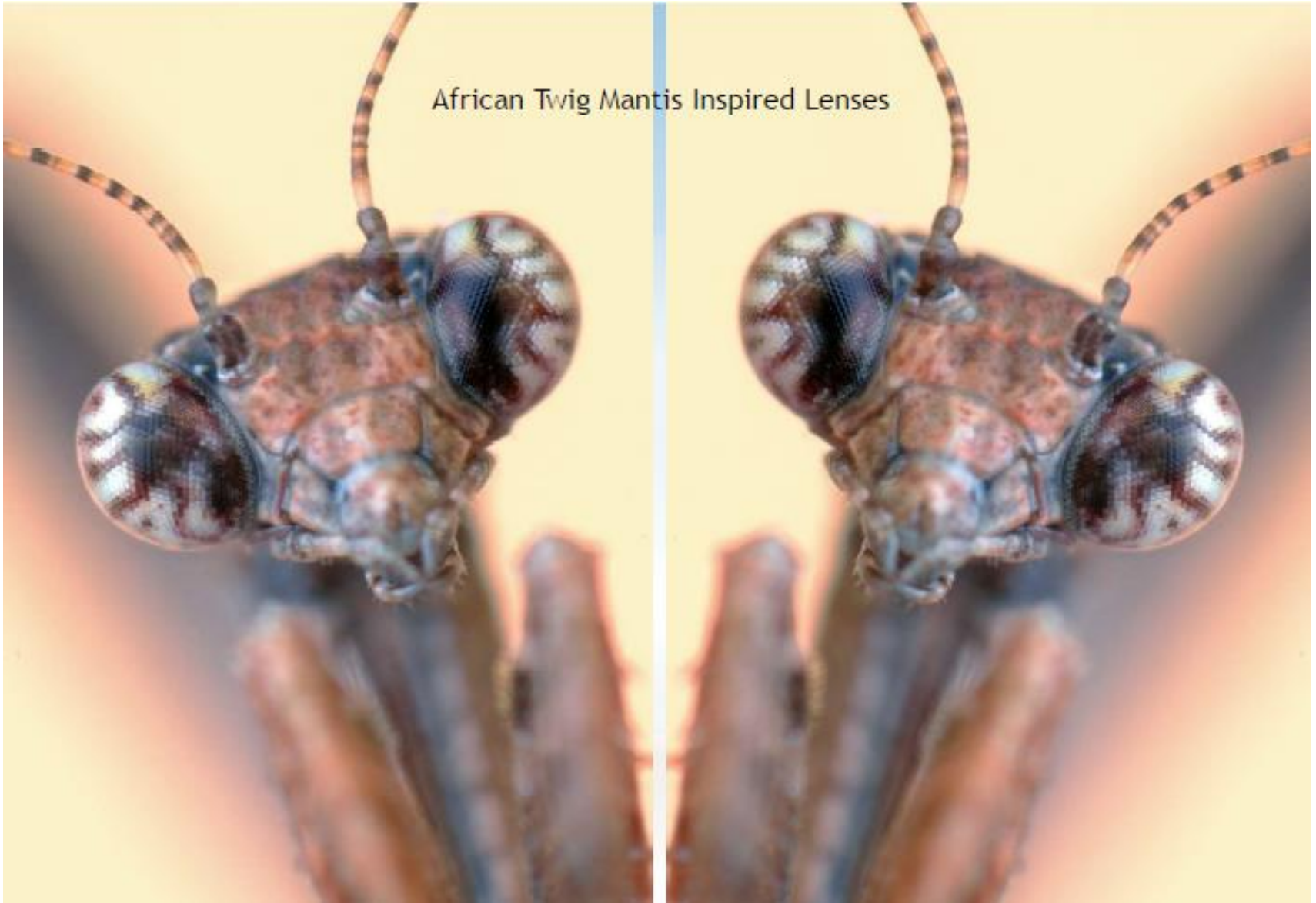
FAQ: "vuli" means **shade** in Swahili

Website: [vuliwear.com](http://vuliwear.com) | Designer: Dionne Ellison 856-217-5150 | Instagram: @Vuliwear

---

---

African Twig Mantis Inspired Lenses







Zag

---

---



Zag

---

---



Zag

---

---

---

---

Blue Damselfly Inspired Lenses









**BknBlu**

---

---



**BlknBlu**

---

---



**BlknBlu**

---

---